



**dbMap**  
Petrosys Group

**dbMap/Web v2026.2**  
Release Notes

## Master Data Management



### dbMap/Web v2026.2

#### Release Notes Overview

The 2026.2 release of dbMap/Web delivers significant enhancements to seismic data integration, physical records management, and well log visualization workflows. New data loaders for Seismic Acquisition and Processed data streamline the ingestion and management of seismic survey information. Physical Records Management capabilities have been expanded with a dedicated data loader and the ability to directly link records to seismic acquisition and processing surveys, seismic lines, wells, and permits.

Well Log Viewer enhancements provide richer workflows, including support for displaying interval-based data such as perforations and point depth data such as sidewall cores directly alongside well logs. In addition, the viewer now supports displaying multiple LAS or DLIS files from the same well within a single chart, enabling improved comparison and integrated analysis of well data.

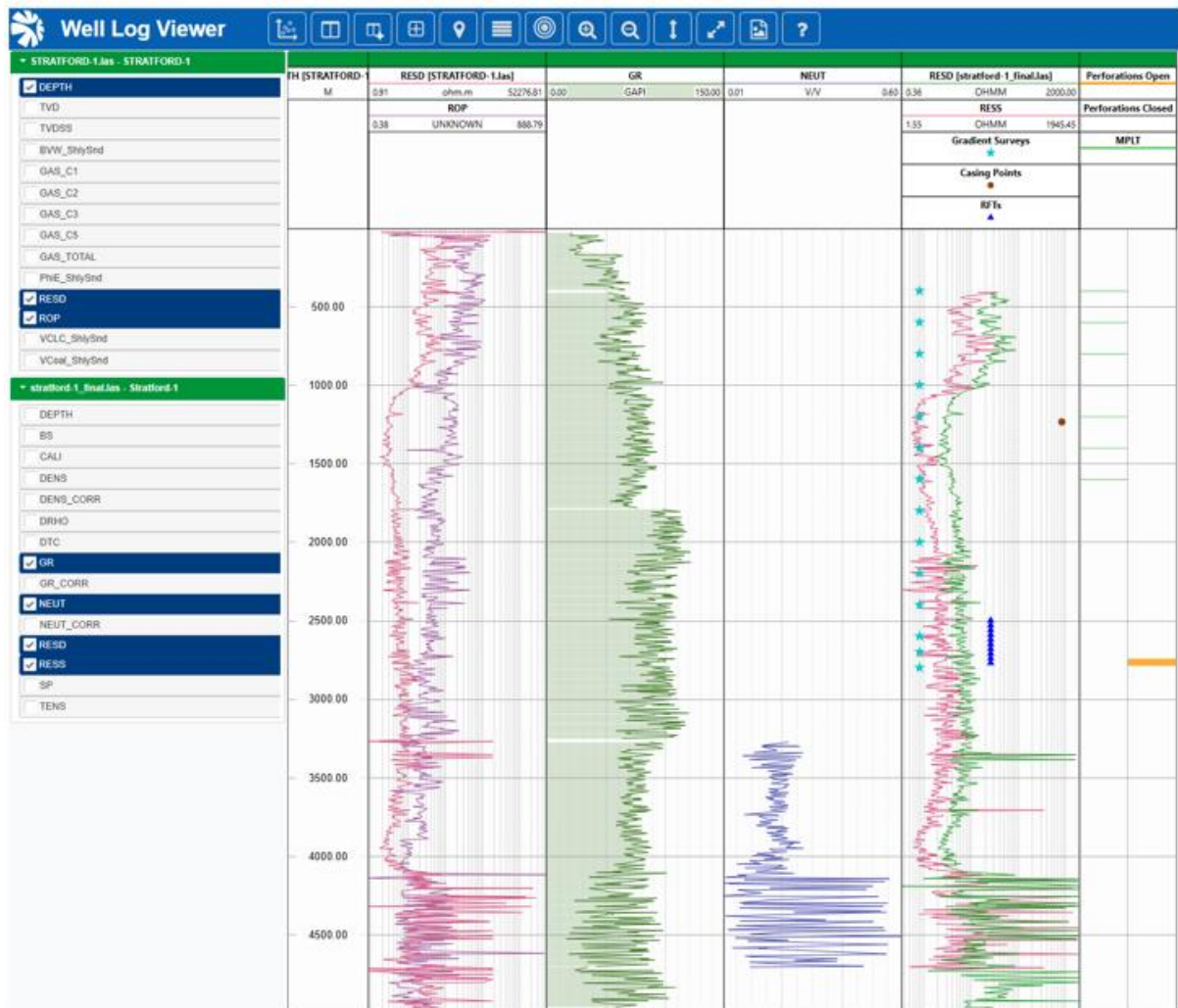
Infrastructure and Security updates bring the platform up to date with the latest library versions, strengthening security posture and improving stability and performance across the application.

# 1 Well Log Viewer - Display Multiple LAS or DLIS Files for a Well

The well log viewer can now load and display curves from multiple LAS or DLIS files for the same well at the same time, so log data from different runs, sources, or depth ranges can be compared side by side. After opening a well log file as normal, click the new 'Add log files' button (plus icon) in the toolbar to choose additional LAS or DLIS files linked to the well via Records Management.

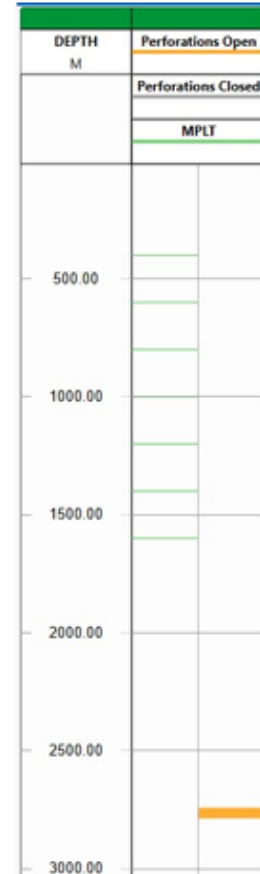
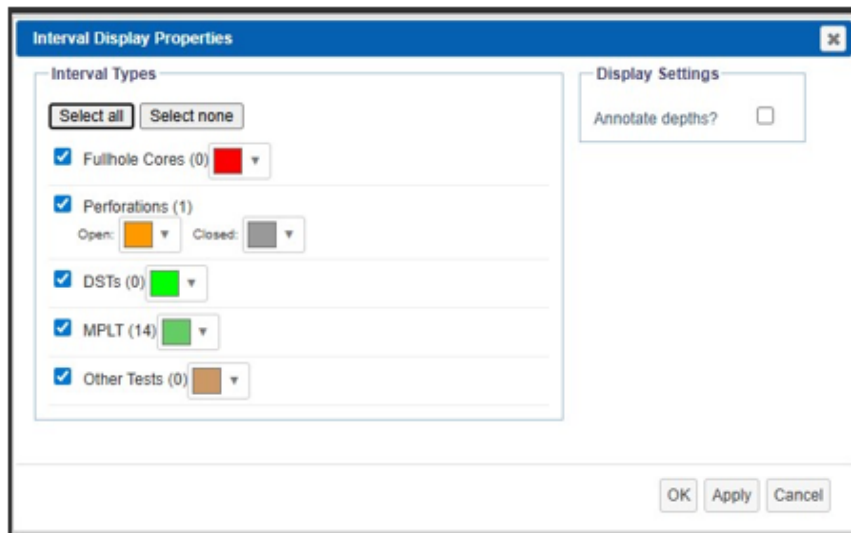
Cross plots are also supported.

The below example shows curves from multiple files alongside interval and point data.

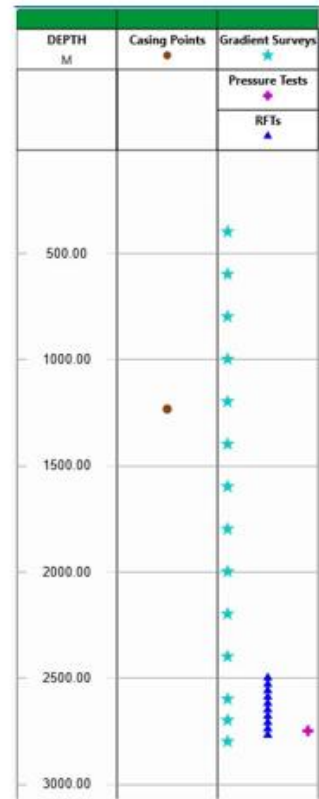
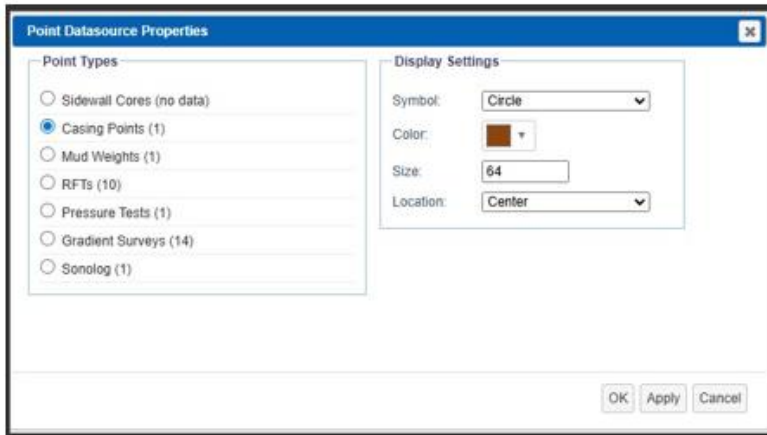


## 2 Well Log Viewer - Display Interval and Point Depth Data

The well log viewer can now display cores, perforations and well tests as depth intervals on a track alongside log curves and formation tops. Depth annotation can be shown within the track, with vertical dividers separating different interval data types. Intervals can be added to display templates so they are remembered between sessions.



The well log viewer can now display point data that has only a single depth (no top and base) on a track. A typical example is casing points, where each entry marks the top of a casing segment. These points appear alongside log curves, formation tops, and depth intervals so all the relevant well information can be reviewed in one view.

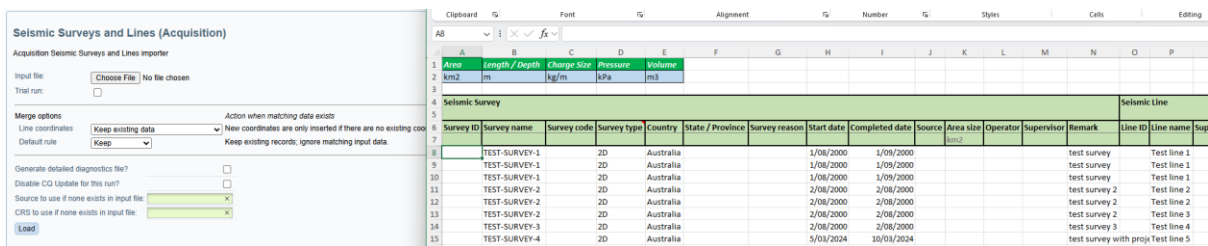


### 3 Seismic Acquisition and Processing Data Loaders

A new Seismic Surveys and Lines spreadsheet data loader is now available from the 'Admin / Data Exchange / Import' screen, allowing seismic surveys and their lines to be bulk-loaded from a template spreadsheet rather than entered one record at a time. Key data that it supports includes: Seismic Survey, Acquisition seismic lines, navigation coordinates, Survey acquisition design, and Seismic line acquisition details for completion date, acquisition contractor and segment ranges.

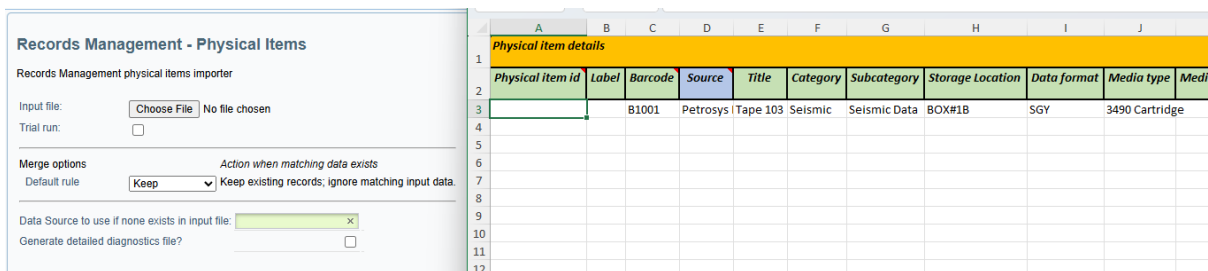
In addition to survey acquisition design it supports Source, Recorder, Receiver, Seismic Recording, Streamer and Vessel attributes.

A new spreadsheet data loader has also been added for processed (reprocessed) seismic surveys and lines, allowing reprocessed survey and line data to be bulk-loaded from a template spreadsheet rather than entered one record at a time.



### 4 Physical Records Management Data Loader

A new spreadsheet data loader is now available for Records Management physical items, reached from the 'Admin / Data Exchange / Import' screen. Physical items and their content records can be bulk-loaded from a template spreadsheet rather than created one at a time, with support for linking to wells, permits, seismic surveys and lines.



### 5 Infrastructure and Security

Alongside the new features, this release delivers important updates to the underlying platform, keeping dbMap/Web current with the latest library versions for enhanced security, stability, and overall performance.

## 6 2026.1 Overview

---

The 2026.1 release of dbMap/Web incorporates updated Petrosys Group branding and delivers significant enhancements to seismic data management, records management workflows, and platform infrastructure. Seismic Data Management & Tracking enhancements are the headline features, bringing a comprehensive redesign of how seismic data is organized and navigated. Records Management receives several productivity-focused improvements. Infrastructure and Security updates bring the platform up to date with the latest library versions, strengthening security posture and improving stability and performance across the application.

## 7 Petrosys Group – New Application Branding

---

Welcome to the refreshed look of dbMap/Web and the Petrosys Group. Our updated branding unifies our product family under a cohesive identity, reflecting our shared commitment to clarity in Subsurface Data Management and Geoscience. This release introduces a refreshed colour palette and visual styling, fully aligned with the Petrosys Group brand.

## 8 Seismic Data Management & Tracking Enhancements

This release leverages the Orders & Transmittals module for enhanced tracking of seismic physical assets, with the interface offering a dedicated Seismic Tracking feature to complement existing capability and focus specifically on seismic assets management. There has been a comprehensive overhaul of how seismic surveys, seismic lines, and associated records management assets are managed within dbMap/Web.

- Support Added for Processed Lines** – The top-level Seismic lines screen has been redesigned to support both acquisition and processed lines. Under Seismic Surveys, a new Processed Lines option has been added to allow acquisition and processed lines to be managed independently at the survey level.

General	Data quality	Map			
Processed survey name	094				
Processed survey code	SS-094				
Processed line name	094_01				
Supervisor	Petrosys Pty Ltd.				
Acquisition survey name	094				
Acquisition survey code	SS-094				
Acquisition line name	094_01				
Geographic CRS	WGS 84				
Coordinate status	Processed	Source			
		Petrosys Pty Ltd - Australia			
	<b>Start</b>	<b>End</b>	<b>Line length</b>		
Acquisition source	1	500	1200 km		
Acquisition receiver			km		
Acquisition CMP			km		
Acquisition vessel			km		
Processed SP	1	100	240 km		
Processed CMP			km		
<b>Related RM Items</b>					
	<b>Title / filename</b>	<b>Start SP</b>	<b>End SP</b>	<b>Category</b>	<b>Sub category</b>
<input type="checkbox"/>	094 Seismic Tape			Seismic	2D Seismic
<input type="checkbox"/>	094_01	1	100	Seismic	2D Seismic
<input type="button" value="Show all"/>					

*Processed line screens*

- **Acquisition & Reprocessed Line Relationships** – Acquisition and reprocessed surveys can now be linked together. The acquisition lines panel shows a list of related reprocessed lines, and reprocessed line panels display acquisition line details.

General		Data quality	Map		
Survey name	094				
Survey code	SS-094				
Line name	094_01				
Supervisor	Petrosys Pty Ltd.				
Geographic CRS	GDA94				
Coordinate status	Actual	Source	GA_ACRSDF_08		
	<b>Start</b>	<b>End</b>	<b>Line length</b>		
Source	1	500	1200 km		
Receiver			km		
CMP			km		
Vessel			km		
Processed Lines					
Survey	Survey code	Processed line	SP range source	SP range CMP	
094	SS-094	094_01	1-100	-	
Related RM Items					
	Title / filename	Start SP	End SP	Category	Sub category
<input type="checkbox"/>	094 Seismic Tape			Seismic	2D Seismic
<input type="checkbox"/>	094_01	1	500	Seismic	2D Seismic

Show all

*Acquisition line screen*

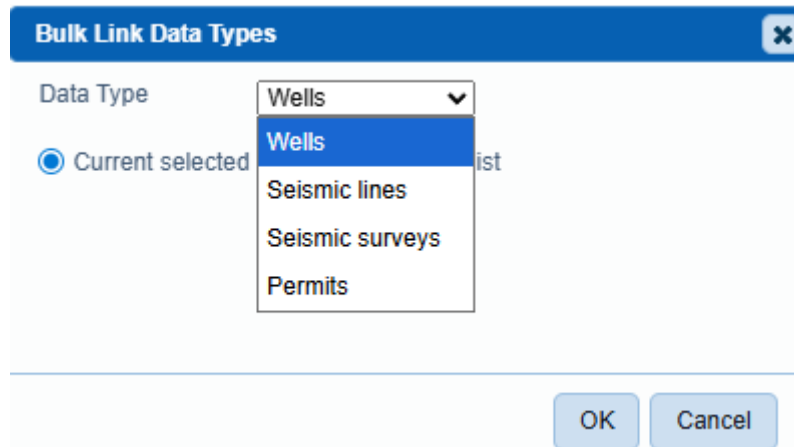
- **Survey Code** – A new Survey Code field has been added to the Seismic Survey header and included in general search fields. It is displayed on both seismic line and processed line panels along with lookups to Seismic surveys and lines, allowing for quick identification.
- **Basin Linking** – Seismic surveys can now be linked to basins with full bidirectional navigation through the user interface.

## 9 Records Management Enhancements

---

The 2026.1 release includes several enhancements to the Records Management module.

- **Bulk Linking** – A selection of RM items can now be bulk-linked to the current or a stored selection of wells, surveys, seismic lines, and land rights.



- **Seismic Tracking Tree Filter**<sup>1</sup> – A dedicated Seismic Tracking tree filter has been added to the Records Management module. This filter makes it easy to find Seismic physical assets based on the category/subcategory of the items and related content items.
- **Available Tree Filter** – A new availability filter has been added to the RM list, making it easier to find items by their current circulation status.
- **RM Catalog Navigation** – A "Show in RM" option has been added to all RM Catalog screens, allowing users to jump directly to the full RM record from any catalog view.

## 10 Infrastructure and Security

---

Alongside the new features, this release delivers important updates to the underlying platform, keeping dbMap/Web current with the latest library versions for enhanced security, stability, and overall performance.

---

<sup>1</sup> The seismic tracking tree filter is dependent on the configuration of Records Management items categories as 'Seismic Tracking' categories. Please contact Petrosys support for assistance configuring this filter.

# Detailed Release Notes Summary dbMap/Web 2026.2

## Enhancements

### *dbMap/Web - Administration*

- [87554](#) GeoServer - Increased the maximum number of database connections used for displaying map layers
- [87509](#) Help / About - Added more system information to assist administrators
- [85104](#) Help / About - Well Log Viewer template directory now listed on the Software Information screen
- [87544](#) SQL Reports - Added in-app help topic covering SQL editing in dbMap/Web
- [87351](#) Upgraded GeoServer to version 2.28.3

### *dbMap/Web - Client*

- [87390](#) Records Management - Order emails now include a Physical Item ID column (Santos only)

### *dbMap/Web - General*

- [87617](#) Records Management - "Add content to existing item" wizard now includes a Physical Item Id column
- [78598](#) Well log viewer - Display curves from multiple LAS or DLIS files for the same well in a single view
- [85931](#) Data loaders - Added a spreadsheet data loader for processed seismic surveys and lines
- [87295](#) Data loaders - Seismic surveys and lines loader is now available from Data Exchange / Import with support for more data types
- [87267](#) Perforations - Added database function to determine whether a perforation is currently open or closed
- [87222](#) Records Management - 'Date produced' column added to the list
- [87294](#) Records Management - Added a spreadsheet data loader for physical items
- [87673](#) Records Management - Improved scheduled job performance with new database indexes
- [87361](#) Seismic lines - Deleting a seismic line now also deletes its segments
- [87436](#) Seismic lines - Survey code added to the 'Common fields' search on the seismic line list
- [87663](#) Seismic surveys - 'Add to map' button added to the Processed Lines list
- [87249](#) Seismic surveys - Renamed 'Shot for' and 'Shot by' fields to clearer industry terms
- [87689](#) The Talend based 'Seismic Lines and Surveys' data loader has been removed
- [87083](#) Well log viewer - Display cores, perforations and tests as depth intervals
- [87265](#) Well log viewer - Display single-depth point data such as casing points and sidewall cores on the chart
- [87066](#) Well log viewer - Stratigraphy type shown when selecting formation tops, and column filters now match anywhere in the value

## Detailed Release Notes Summary dbMap/Web 2026.2

### Bug Fixes

#### *dbMap/Web - Administration*

[87514](#) Admin / Security / Change Current User Password - Fixed an intermittent display issue

[87388](#) Updated third-party Java and JavaScript libraries for improved security and stability

#### *dbMap/Web - Client*

[87595](#) Mapping - Fixed new seismic lines not appearing on the map (Santos only)

#### *dbMap/Web - General*

[87071](#) Records Management orders - Requestor is now CC'd only on the order transmittal confirmation email

[87368](#) Seismic lines - Fixed error when viewing the audit history for fields on the Seismic Line screen

[87387](#) Processed seismic lines - Save as now retains the linked acquisition survey and line on the new copy

[87615](#) Records Management - "Add content to existing item" wizard now shows sub-category names instead of codes

[87586](#) Reports - Fixed dependent runtime parameter lookups failing to open with an invalid character error

[87344](#) Seismic Surveys - Related Surveys panel no longer links recursively to itself and Advanced Search now correctly finds surveys with related surveys

[87363](#) Creating bin grids for a dbMap Seismic surveys no longer errors

[87695](#) Data loaders - Fix error messages when only part of coordinates are supplied

[87367](#) Default lookup query "dbMap:ProjectedCRS" now works

[87697](#) Fixed document preview via the 'RM Catalog' lists

[87716](#) Fixed list display issue when adding a new seismic line

[87172](#) Records Management - Category and Subcategory lookups now hide inactive values

[87313](#) Records Management - Fixed incorrect column headers in wizard lookup dialogs

[87162](#) Records Management - Storage location lookup now hides inactive locations

[87373](#) Records Management - Wizard no longer hangs after deleting a storage location

[87160](#) Records Management wizard - 'Add to list' button now changes to 'Add file to list below' when cataloging digital files

[87612](#) Reports - Dependent runtime parameter dropdowns now open and populate correctly

[87432](#) Seismic lines - Fixed Asset content / Subcategory tree filter on the seismic and processed line lists

[87596](#) Seismic lines - Latitude and Longitude on the Coordinates grid now use 7 decimal places

[87338](#) Seismic surveys - Fixed error when assigning multiple obligations or using the Obligations lookup on Oracle databases with the compatibility parameter set to 12.1

# Petrosys Release dbMap/Web 2026.2

Detailed Release Notes

## [dbMap/Web - Administration](#) [Enhancements](#)

### **GeoServer - Increased the maximum number of database connections used for displaying map layers**

87554

The GeoServer connection pool used for GIS map layers has been increased from 10 to 20 database connections. This reduces waits and timeouts when several users are loading map layers at the same time.

### **Help / About - Added more system information to assist administrators**

87509

To help administrators investigate problems, the 'Help / About' screen now provides additional system information. The License usage tab shows server start time and uptime. Available memory, and free disk space is now shown. The Diagnostics & Utilities tab includes a new server log viewer (administrators only) with filtering, refresh, and auto-refresh controls, so the recent contents of the dbMap/Web log file can be reviewed.

### **Help / About - Well Log Viewer template directory now listed on the Software Information screen**

85104

The directory used to store external Well Log Viewer templates is now shown in the Paths section of the 'Help / About / Software Information' screen, making it easier for administrators to locate where shared templates are saved.

### **SQL Reports - Added in-app help topic covering SQL editing in dbMap/Web**

87544

A new help topic has been added covering SQL editing in dbMap/Web. It can be reached from the help link on the 'Admin / Reference tables / SQL reports' screen and explains how to write and edit the SQL used by reports and data selection queries.

### **Upgraded GeoServer to version 2.28.3**

87351

A new version of GeoServer is being deployed alongside the 2026.2 release of dbMap/Web. See the release instructions for details on deploying.

---

## [dbMap/Web - Administration](#)

## [Bug Fixes](#)

### **Admin / Security / Change Current User Password - Fixed an intermittent display issue**

87514

Fixed inconsistent behavior on the 'Admin / Security / Change current user password' screen. The screen could previously load in view mode (showing 'Edit' and 'Delete' buttons) or load in edit mode with an overlay that blocked interaction. It now consistently loads in edit mode ready for a new password to be entered, and the user can navigate away via the main menu if they do not want to change their password.

### **Updated third-party Java and JavaScript libraries for improved security and stability**

87388

Third-party Java and JavaScript libraries have been updated to their latest compatible versions. These upgrades address multiple known security vulnerabilities (CVEs) across several components, improving the overall security posture of the application.

## **Records Management - Order emails now include a Physical Item ID column (Santos only)**

87390

The order confirmation and order notification emails sent when an order is placed in Records Management now include a Physical Item ID column as the first column of the items table. This makes items uniquely identifiable in cases where the Title or Barcode are not populated.

## **Mapping - Fixed new seismic lines not appearing on the map (Santos only)**

87595

Fixed an issue at Santos where newly added seismic lines were not displaying Source coordinates on the map. The PETROSYS\_SEIS\_LINE\_S database view has been updated to use the current spatial geometry column instead of a legacy column that was no longer being maintained. A workaround had already been deployed in the interim.

## **Records Management - "Add content to existing item" wizard now includes a Physical Item Id column**

87617

The "Add content to existing catalogued item" option in the Records Management cataloging wizard now displays a Physical Item Id column in the existing-item picker. This makes it easier to uniquely identify the right item when the Title and Barcode are not sufficient on their own.

## **Well log viewer - Display curves from multiple LAS or DLIS files for the same well in a single view**

78598

The well log viewer can now load and display curves from multiple LAS or DLIS files for the same well at the same time, so log data from different runs, sources, or depth ranges can be compared side by side. After opening a well log file as normal, click the new 'Add log files' button (plus icon) in the toolbar to choose additional LAS or DLIS files linked to the well via Records Management. Each loaded file is shown as its own collapsible section in the curve selection panel and contributes curves to the composite display, with the depth axis automatically covering the combined depth range. Cross plots are also supported.

## **Data loaders - Added a spreadsheet data loader for processed seismic surveys and lines**

85931

A new spreadsheet data loader has been added for processed (reprocessed) seismic surveys and lines, allowing reprocessed survey and line data to be bulk-loaded from a template spreadsheet rather than entered one record at a time.

## **Data loaders - Seismic surveys and lines loader is now available from Data Exchange / Import with support for more data types**

87295

A new Seismic Surveys and Lines spreadsheet data loader is now available from the 'Admin / Data Exchange / Import' screen, allowing seismic surveys and their lines to be bulk-loaded from a template spreadsheet rather than entered one record at a time. Key data that it supports includes: Seismic Survey, Acquisition seismic lines, navigation coordinates, Survey acquisition design, and Seismic line acquisition details for completion date, acquisition contractor and segment ranges.

In addition to survey acquisition design it supports Source, Recorder, Receiver, Seismic Recording, Streamer and Vessel attributes.

## **Perforations - Added database function to determine whether a perforation is currently open or closed**

87267

A new database function PS\_IS\_PERFORATION\_OPEN has been added that determines whether a perforation is currently open or closed based on its date and interaction with any isolations defined for the well. It can be used in SQL reports and queries to filter perforations by their current status. It is used by the well log viewer when displaying perforation intervals.

## **Records Management - 'Date produced' column added to the list**

87222

A 'Date produced' column has been added to the Records Management list. The column is available to all clients. On the Records Management item panel, the date produced field has also been corrected for content items so that the item's own date is shown on the 'Item' tab, while the 'Date produced' field on the 'Contained by' tab is now read-only and shows the date from the containing item.

## **Records Management - Added a spreadsheet data loader for physical items**

87294

A new spreadsheet data loader is now available for Records Management physical items, reached from the 'Admin / Data Exchange / Import' screen. Physical items and their content records can be bulk-loaded from a template spreadsheet rather than created one at a time, with support for linking to wells, permits, seismic surveys and lines.

## **Records Management - Improved scheduled job performance with new database indexes**

87673

Improved the performance of the Records Management scheduled background job by adding new indexes on the PS\_RM\_PHYSINFO\_ITEM and PS\_RM\_FILES tables. These indexes are created automatically when applying the 2026.2 database upgrade scripts.

## **Seismic lines - Deleting a seismic line now also deletes its segments**

87361

Deleting a seismic line now automatically deletes its seismic segments at the same time, whether the line is deleted from dbMap/Web, dbMap/PRO, or via SQL. This makes it easier to clean up or bulk-delete seismic lines, as segments no longer need to be removed first to satisfy database constraints.

## **Seismic lines - Survey code added to the 'Common fields' search on the seismic line list**

87436

The 'Common fields' search on the seismic line list now also matches on survey code, so seismic lines belonging to a particular survey can be found without having to add the survey code as a separate filter.

## **Seismic surveys - 'Add to map' button added to the Processed Lines list**

87663

The 'Add to map' button is now available on the Processed Lines list under a seismic survey. Processed lines belonging to a survey can be added directly to the map without needing to navigate to a separate processed lines list first.

## **Seismic surveys - Renamed 'Shot for' and 'Shot by' fields to clearer industry terms**

87249

Several field labels on the seismic survey screens have been updated to clearer industry-standard terms. On the Seismic Survey header, 'Shot for' is now labeled 'Operator'. On the Acquisition design screen, 'Shot for' is now labeled 'Acquired for' and 'Shot by' is now labeled 'Acquisition contractor'.

## **The Talend based 'Seismic Lines and Surveys' data loader has been removed**

87689

The unsupported Talend based 'Seismic Lines and Surveys' data loader has been replaced by a new 'Seismic Surveys and Lines (Acquisition)' data loader.

## Well log viewer - Display cores, perforations and tests as depth intervals

87083

The well log viewer can now display cores, perforations and well tests as depth intervals on a track alongside log curves and formation tops. Depth annotation can be shown within the track, with vertical dividers separating different interval data types. Intervals can be added to display templates so they are remembered between sessions.

## Well log viewer - Display single-depth point data such as casing points and sidewall cores on the chart

87265

The well log viewer can now display point data that has only a single depth (no top and base) on a track. A typical example is casing points, where each entry marks the top of a casing segment. These points appear alongside log curves, formation tops, and depth intervals so all the relevant well information can be reviewed in one view.

## Well log viewer - Stratigraphy type shown when selecting formation tops, and column filters now match anywhere in the value<sup>87066</sup>

The formation tops selection dialog in the well log viewer now shows the stratigraphy type alongside each top, making it easier to pick the right one when several tops share the same name across different stratigraphic schemes. The column filter on this dialog has also been changed to match anywhere within a value rather than only matching from the start, so partial searches return more relevant results.

---

### dbMap/Web - General

### Bug Fixes

## Records Management orders - Requestor is now CC'd only on the order transmittal confirmation email

87071

The order requestor is no longer CC'd on the order notification email (sent to the orders team) or the order confirmation email (which is already addressed to the requestor). The requestor is now only CC'd on the order transmittal confirmation email, so they are kept informed when their order has been transmitted without receiving redundant copies of earlier notifications.

## Seismic lines - Fixed error when viewing the audit history for fields on the Seismic Line screen

87368

Fixed an error that occurred when viewing the audit history for fields on the Seismic Line screen. The audit history report now loads as expected and shows the change history for the selected field.

## Processed seismic lines - Save as now retains the linked acquisition survey and line on the new copy

87387

Fixed an issue where using Save as to copy a processed seismic line dropped the link to the acquisition survey and acquisition line on the new copy, requiring users to re-open the new line and re-enter those details. Save as now keeps the acquisition survey and line populated, so the new line appears in the list with its parent details intact.

## Records Management - "Add content to existing item" wizard now shows sub-category names instead of codes

87615

In the Records Management cataloging wizard, the "Add content to existing catalogued item" option's existing-item picker was showing sub-category codes instead of human-readable names, making it harder to identify the right item. The Sub Category column now displays the name.

## Reports - Fixed dependent runtime parameter lookups failing to open with an invalid character error

87586

When running a report with runtime parameters where one dropdown depends on the value selected in another the dependent dropdown could fail to open with a database error. The dependent dropdowns now open and populate correctly once the parameters they depend on have been filled in.

## **Seismic Surveys - Related Surveys panel no longer links recursively to itself and Advanced Search now correctly finds surveys with related surveys**

87344

Fixed two issues on the Seismic Surveys / Related Surveys screen. Previously, drilling into a related survey showed another Related Surveys button that did not work. Using Advanced Search to find surveys that have related surveys also returned too many surveys; the search now matches only surveys that genuinely have related survey records.

## **Creating bin grids for a dbMap Seismic surveys no longer errors**

87363

With the dbMap/Web 2026.1 database upgrades, if you tried to create or edit a dbMap seismic survey bin grid using Petrosys PRO, you would get an error that a trigger was invalid. This has been fixed.

## **Data loaders - Fix error messages when only part of coordinates are supplied**

87695

Data loaders that converts coordinates now report the correct error when a row supplies only one half of a coordinate pair. Previously, supplying longitude without latitude reported "If latitude is supplied you must also supply longitude", and similarly the easting/northing message was reversed; the messages now match what the row actually contains, so users can identify and fix the missing value without guessing.

## **Default lookup query "dbMap:ProjectedCRS" now works**

87367

Stored dbMap SQL reports that made use of the lookup query "dbMap:ProjectedCRS" now work. Previously, if the dbMap/Web 2026.1 database upgrade had been applied, you would get an error that the lookup query was invalid.

## **Fixed document preview via the 'RM Catalog' lists**

87697

Fixed a bug causing an error to be shown when previewing a document via the 'preview' options in 'RM Catalog' lists.

## **Fixed list display issue when adding a new seismic line**

87716

Fixed a bug causing the newly added seismic line, and other seismic lines in the same survey, to be excluded from the 'Seismic Lines' list after inserting a new line.

## **Records Management - Category and Subcategory lookups now hide inactive values**

87172

The Category and Subcategory lookups on the Records Management header and in the Records Management wizard now only show active values. Existing records that already reference a Category or Subcategory which has since been made inactive continue to display their assigned value.

## **Records Management - Fixed incorrect column headers in wizard lookup dialogs**

87313

Fixed an issue where lookup dialogs in the Records Management wizard could display incorrect column headers and mismatched data. For example, the Media Type lookup showed "Country Name" as a column header with unrelated values. Lookup dialogs in the wizard now display the correct column headers for 'Long name' columns.

## **Records Management - Storage location lookup now hides inactive locations**

87162

The storage location lookup on the Records Management header and in the Records Management wizard now only offers active storage locations. If an existing record already references a storage location that has since been made inactive, that current value is still shown so the record can be viewed and edited without losing its assignment.

## **Records Management - Wizard no longer hangs after deleting a storage location**

87373

Fixed an issue where the Records Management wizard would display an endless 'Deleting' message after removing a storage location, even though the deletion had completed successfully. The wizard now clears the message correctly.

## **Records Management wizard - 'Add to list' button now changes to 'Add file to list below' when cataloging digital files**

87160

In the Records Management wizard, the button for adding entries to the working list now adapts to the type of item being cataloged. When cataloging digital files, the button reads 'Add file to list below'. When cataloging physical items, the button continues to read 'Add content to list below' as before.

## **Reports - Dependent runtime parameter dropdowns now open and populate correctly**

87612

When running a report with multiple runtime parameter prompts where one dropdown depends on a value selected in another — for example, the default "Spatial - Select Features by any Attribute Value." report in GIS - /General reports, whose Attribute and Value dropdowns depend on the Culture Group selection — clicking a dependent dropdown could fail to open with a database error. The dependent dropdowns now open and populate as soon as the parameters they depend on have been filled in.

## **Seismic lines - Fixed Asset content / Subcategory tree filter on the seismic and processed line lists**

87432

Fixed an error that occurred when using the 'Asset content / Subcategory' tree filter on the seismic line and processed line lists. The filter now returns matching lines as expected instead of reporting an error.

## **Seismic lines - Latitude and Longitude on the Coordinates grid now use 7 decimal places**

87596

Latitude and Longitude on the Seismic Lines Coordinates grid were previously shown to only 2 decimal places. They now display using 7 decimal places, so the values match the precision used elsewhere in dbMap/Web.

## **Seismic surveys - Fixed error when assigning multiple obligations or using the Obligations lookup on Oracle databases with the compatibility parameter set to 12.1**

87338

Fixed an error that prevented multiple obligations from being assigned to a seismic survey, and that also affected the Obligations lookup on the Obligations panel. The issue occurred on Oracle databases running with older compatibility settings (such as 12.1). Obligations can now be assigned and looked up successfully on those databases.

# Detailed Release Notes Summary dbMap/Web 2026.1.1

## Bug Fixes

### *dbMap/Web - General*

- [87521](#) Fixed CRS transformation issue causing dbMap/Web to terminate unexpectedly
- [87527](#) Fixed issue deploying dbMap/Web on Oracle Linux 9

# Petrosys Release dbMap/Web 2026.1.1

Detailed Release Notes

---

## dbMap/Web - General

## Bug Fixes

### **Fixed CRS transformation issue causing dbMap/Web to terminate unexpectedly**

87521

Fixed an issue causing valid CRS transformations to fail and/or the dbMap/Web service to terminate unexpectedly.

### **Fixed issue deploying dbMap/Web on Oracle Linux 9**

87527

Fixed an issue preventing dbMap/Web from deploying correctly on Oracle Linux 9

# Detailed Release Notes Summary dbMap/Web 2026.1

## Enhancements

### *dbMap/Web - Administration*

- [86652](#) Administration - Debug mode changes now require confirmation and displays who last changed the setting
- [86666](#) dbMap EPSG CRS data upgraded to version 12.17
- [74180](#) Reference screens - Active indicator can now be edited on the Source reference screen
- [86954](#) Updated third-party Java and JavaScript libraries for improved security and stability

### *dbMap/Web - Client*

- [86927](#) Fields - Removed unique name constraint to allow fields with the same name from different countries (Santos only)
- [86937](#) 'Permits' relabeled to 'Blocks' (ZPRA only)
- [86367](#) Well Path TVD/TVDSS web services restored for external data loading processes (Origin only)

### *dbMap/Web - General*

- [85908](#) Seismic Data Management & Tracking Enhancements
- [86293](#) Production Charts - Fixed zero values appearing as blank in data exports
- [87138](#) Records Management - Added preview support for RTF files
- [87178](#) dbMap/Web now supports geographic CRS conversions in reports and directional survey computations
- [86307](#) dbMap/Web updated with the new Petrosys Group corporate branding
- [86989](#) GIS mapping - Improved display performance for GIS layers
- [86587](#) Panel lists now automatically resize columns to fit content
- [86913](#) Records Management - Added 'Available?' filter to the RM list
- [86593](#) Records Management - Added 'Show in RM' option to all RM Catalog screens
- [85947](#) Records Management - Added bulk linking of RM items to wells, surveys, seismic lines and land rights
- [86914](#) Records Management - Content tab is now always shown for physical items
- [86255](#) Seismic Surveys - Added Basin filter to the tree filter
- [86781](#) Seismic Surveys / Acquisition / Vessels - Vessel name now displayed
- [87350](#) Records Management Enhancements

# Detailed Release Notes Summary dbMap/Web 2026.1

## Bug Fixes

### *dbMap/Web - Client*

- [86836](#) Default reports and queries now work for PPDM3.9 clients
- [87174](#) RM Wizard - Adding content to a physical item with the Format specified no longer gives error (Santos only)

### *dbMap/Web - General*

- [87179](#) dbMap/Web - Wells Quality computation performance improved
- [87196](#) RM - PETROSYS\_ADMIN role no longer required to edit orders and create transmittals
- [78381](#) Reference screens - Source column added to the Formations list and panel
- [86128](#) Data lists - Fixed column and header misalignment when adding columns
- [86971](#) Basins - 'Active?' column now defaults to show values as active when the value has not been explicitly set
- [86945](#) Records Management - Excluded file icon and preview icon columns from list exports
- [86873](#) Records Management - Preview options no longer shown for files without a file extension
- [86769](#) Records Management / Circulation History - Fixed error loading the screen for PPDM 3.8 clients
- [87153](#) Records Management / Orders - Search filter now applies to the orders list
- [86878](#) Records Management / Transmittals - Search filter now applies to the transmittals list
- [86585](#) Reference Tables - Added the Obligation Type reference screen
- [86907](#) Reports - Full query now displayed in the report selection dialog for long queries
- [87045](#) Seismic Lines - Coordinate status dropdown now shows 'Provisional' instead of incorrect 'Revisional' value
- [85058](#) Seismic Lines - Fixed error when charting seismic line coordinates
- [86813](#) Temporary files created by dbMap/Web on startup are now automatically cleaned up
- [86891](#) Well Log Browser - Fixed adding logs to the shopping cart
- [86952](#) Wells / Well Logs / File Parameters - Parameter value unit now shows display name instead of code

# Petrosys Release dbMap/Web 2026.1

## Detailed Release Notes

### [dbMap/Web - Administration](#) [Enhancements](#)

#### **Administration - Debug mode changes now require confirmation and displays who last changed the setting** 86652

When an administrator enables or disables site-wide debug mode from the Diagnostics & Utilities screen, a confirmation dialog now warns that the change will affect performance for all users. The screen also displays which user last changed the debug mode setting, visible to all administrators.

#### **dbMap EPSG CRS data upgraded to version 12.17** 86666

The dbMap EPSG CRS database has been upgraded to version 12.17. This includes support for multiple new coordinate systems.

This is included with the Oracle database upgrades for dbMap/Web 2026.1.

NOTE: For Petrosys PRO clients, it is recommended to regenerate the SQLite CRS database (ps\_site\_crs.sdb) and replace the one in the PRO local directory after the running the Oracle database upgrade. This can be done using the PRO/Mapping/Admin/CRS/Export to SQLite option when connected to the dbMap database.

#### **Reference screens - Active indicator can now be edited on the Source reference screen** 74180

The Source reference screen now includes an editable Active indicator field, allowing administrators to set the active status of source records to Yes, No, or blank. Additional fields (effective date, expiry date, row quality, and PPDM GUID) are also now displayed.

#### **Updated third-party Java and JavaScript libraries for improved security and stability** 86954

Third-party Java and JavaScript libraries have been updated to their latest compatible versions. These upgrades address multiple known security vulnerabilities (CVEs) across several components, improving the overall security posture of the application.

### [dbMap/Web - Client](#) [Enhancements](#)

#### **Fields - Removed unique name constraint to allow fields with the same name from different countries (Santos only)** 86927

A unique constraint on field names has been removed to allow Fields with the same name from different countries to be created. This constraint was specific to the Santos deployment and did not affect other dbMap/Web clients.

#### **'Permits' relabeled to 'Blocks' (ZPRA only)** 86937

The 'Permits' label has been changed to 'Blocks' throughout the application for ZPRA.

## Well Path TVD/TVDSS web services restored for external data loading processes (Origin only) 86367

The well path TVD and TVDSS computation web service endpoints have been restored for use by external data loading processes without requiring authentication. These endpoints were previously accessible but became blocked when earlier security changes were introduced. Access is controlled by the web service credentials configured in site properties.

---

### dbMap/Web - Client

### Bug Fixes

#### Default reports and queries now work for PPDM3.9 clients 86836

For clients running dbMap/Web against the PPDM3.9 database model, many of the Default reports and data selection queries did not work, due to differences with PPDM3.8 database structure, such as column names being changed. These queries have been updated to work for the PPDM3.9 model.

#### RM Wizard - Adding content to a physical item with the Format specified no longer gives error (Santos only) 87174

When using the Add RM Item wizard to create a new physical item and add data content information with the Format value specified, it no longer gives a constraint error. This was only a problem for Santos.

---

### dbMap/Web - General

### Enhancements

#### Seismic Data Management & Tracking Enhancements 85908

This release leverages the Orders & Transmittals module for enhanced tracking of seismic physical assets, with the interface offering a dedicated Seismic Tracking feature to complement existing capability and focus specifically on seismic assets management. There has been a comprehensive overhaul of how seismic surveys, seismic lines, and associated records management assets are managed within dbMap/Web.

- Support Added for Processed Lines – The top-level Seismic lines screen has been redesigned to support both acquisition and processed lines. Under Seismic Surveys, a new Processed Lines option has been added to allow acquisition and processed lines to be managed independently at the survey level.
- Acquisition & Reprocessed Line Relationships – Acquisition and reprocessed surveys can now be linked together. The acquisition lines panel shows a list of related reprocessed lines, and reprocessed line panels display acquisition line details.
- Survey Code – A new Survey Code field has been added to the Seismic Survey header and included in general search fields. It is displayed on both seismic line and processed line panels along with lookups to Seismic surveys and lines, allowing for quick identification.
- Basin Linking – Seismic surveys can now be linked to basins with full bidirectional navigation through the user interface.

#### Production Charts - Fixed zero values appearing as blank in data exports 86293

When exporting production chart data to Excel, zero values are now correctly displayed in cells. Previously, cells containing a value of zero could appear blank in the exported spreadsheet, making it unclear whether the fluid had been tested.

#### Records Management - Added preview support for RTF files 87138

RTF files cataloged in Records Management can now be previewed directly in dbMap/Web, alongside the existing support for previewing DOC and DOCX files.

## **dbMap/Web now supports geographic CRS conversions in reports and directional survey computations**

87178

dbMap/Web now supports doing geographic CRS conversions when using dbMap functions in SQL reports, such as `ps_crs_convert_x/y`. Previously these functions would only support projected CRS conversions when the geographic CRS matched the one being used by the projected CRS.

In addition to this, it now also supports Well directional survey computations when the geographic CRS of the Well is different to that of the projected CRS assigned to the directional survey. e.g. when computing the BH location.

## **dbMap/Web updated with the new Petrosys Group corporate branding**

86307

dbMap/Web has been updated with the new Petrosys Group corporate branding, including updated logos, colors, and styling throughout the application.

## **GIS mapping - Improved display performance for GIS layers**

86989

GIS layer display performance on the map has been improved. Previously, layers could intermittently be very slow to render or fail to display when working with very large numbers of GIS objects. The same optimization has been applied to point, polygon and line layer queries for consistent performance.

## **Panel lists now automatically resize columns to fit content**

86587

Panel list columns now automatically resize to fit their content when loaded, matching the behavior of the main data grids. This provides a better default view of data without needing to manually adjust column widths.

## **Records Management - Added 'Available?' filter to the RM list**

86913

A new 'Available?' filter has been added to the Records Management list. This allows you to quickly filter items based on their availability status. An item is considered available if it has no active circulation record or its circulation status is 'Available'. Content items inherit the availability of their containing item.

## **Records Management - Added 'Show in RM' option to all RM Catalog screens**

86593

A new 'Show in RM' button has been added to each of the RM Catalog screens, including under Wells, Seismic Surveys, Seismic Lines, Processed Lines, Basins, Fields, Permits, Facilities, and GIS Features. Selecting items on an RM Catalog screen and clicking 'Show in RM' opens the top-level Records Management screen filtered to those items, making it easier to manage cataloged files directly from any data type.

## **Records Management - Added bulk linking of RM items to wells, surveys, seismic lines and land rights**

85947

A new 'Bulk Link Data Types' option is available on the Records Management list. This allows you to link a selection of RM items to a selection of wells, seismic surveys, seismic lines or land rights in a single operation. You can link to either the current list selection or a previously saved selection. Duplicate links are automatically prevented.

## **Records Management - Content tab is now always shown for physical items**

86914

The Content tab on the Records Management header is now always displayed for physical items, even when the item has no content. Previously, the tab was only visible if the item had content, which could be confusing when browsing items.

## **Seismic Surveys - Added Basin filter to the tree filter**

86255

The tree filter on the Seismic Surveys screen now includes a Basin option, allowing surveys to be filtered based on their linked basins.

## Seismic Surveys / Acquisition / Vessels - Vessel name now displayed

86781

The vessel name is now shown on the 'Seismic Surveys / Acquisition / Vessels' screen. Previously only the vessel ID and remark were displayed.

## Records Management Enhancements

87350

The 2026.1 release includes several enhancements to the Records Management module.

- Bulk Linking – A selection of RM items can now be bulk-linked to the current or a stored selection of wells, surveys, seismic lines, and land rights.
- Seismic Tracking Tree Filter – A dedicated Seismic Tracking tree filter has been added to the Records Management module. This filter makes it easy to find Seismic physical assets based on the category/subcategory of the items and related content items.
- Available Tree Filter – A new availability filter has been added to the RM list, making it easier to find items by their current circulation status.
- RM Catalog Navigation – A "Show in RM" option has been added to all RM Catalog screens, allowing users to jump directly to the full RM record from any catalog view.

---

### dbMap/Web - General

### Bug Fixes

## dbMap/Web - Wells Quality computation performance improved

87179

The Quality computation option no longer times out when the "ONLY items in the current list that are out of sync" option is selected. Previously the computation could take several minutes and fail with a timeout error, even with only a few items selected. It now completes in a few seconds.

## RM - PETROSYS\_ADMIN role no longer required to edit orders and create transmittals

87196

The ability to edit RM Orders and create Transmittals now just relies on the database role PETROSYS\_RM\_ORDER\_UPDATE being granted to a user. Previously this also required the PETROSYS\_ADMIN database role to be granted.

## Reference screens - Source column added to the Formations list and panel

78381

The Source field is now displayed on the formations reference screen.

## Data lists - Fixed column and header misalignment when adding columns

86128

Fixed an issue where adding a column as the first column in a grid caused the column headers and data to become misaligned when the grid was subsequently filtered.

## Basins - 'Active?' column now defaults to show values as active when the value has not been explicitly set

86971

Fixed a bug on the 'Basins' list where the 'Active?' column incorrectly displayed rows as inactive when the active indicator had not been explicitly set in the database. These rows now correctly display as active.

## Records Management - Excluded file icon and preview icon columns from list exports

86945

When exporting data from a Records Management list, the file icon and preview icon columns are no longer included. These columns contained internal display data rather than useful information, and have been removed from exports for a cleaner result.

## **Records Management - Preview options no longer shown for files without a file extension**

86873

Fixed a bug where all preview options were incorrectly shown for electronic files in Records Management that do not have a file extension. Preview options are now only shown when the file type can be determined from the extension.

## **Records Management / Circulation History - Fixed error loading the screen for PPDM 3.8 clients**

86769

Fixed an error that prevented the 'Records Management / Circulation History' screen from loading for PPDM 3.8 clients.

## **Records Management / Orders - Search filter now applies to the orders list**

87153

Fixed a bug where the search filter on the 'Records Management / Orders' screen was not filtering the list. The search now works as expected.

## **Records Management / Transmittals - Search filter now applies to the transmittals list**

86878

Fixed a bug where the search filter on the 'Records Management / Transmittals' screen was not filtering the list. The search now works as expected.

## **Reference Tables - Added the Obligation Type reference screen**

86585

The Obligation Type reference screen (Admin / Reference Tables / PPDM / General Reference / Obligation type) has been added.

## **Reports - Full query now displayed in the report selection dialog for long queries**

86907

The report selection dialog now displays the full query text for reports that have long multi-part queries. Previously the query could be displayed as truncated if it was very long.

## **Seismic Lines - Coordinate status dropdown now shows 'Provisional' instead of incorrect 'Revisional' value**

87045

The coordinate status dropdown on the seismic line header panel and related lookups throughout the application previously included an incorrect 'Revisional' option. This has been replaced with the correct 'Provisional' value, consistent with Petrosys PRO.

## **Seismic Lines - Fixed error when charting seismic line coordinates**

85058

Fixed an error that occurred when attempting to chart coordinates for a seismic line. The chart now displays correctly.

## **Temporary files created by dbMap/Web on startup are now automatically cleaned up**

86813

dbMap/Web now automatically cleans up temporary files it creates on startup. Cleanup occurs both on application startup (removing old files no longer in use) and on shutdown. This works safely when multiple dbMap/Web instances are running on the same server.

## **Well Log Browser - Fixed adding logs to the shopping cart**

86891

Fixed an issue where adding well logs to the shopping cart via the Well Log Browser would fail with an error. Logs can now be added to the cart as expected.

## **Wells / Well Logs / File Parameters - Parameter value unit now shows display name instead of code**

86952

The 'Parameter value unit' field on the Wells / Well Logs / File Parameters screen was displaying the internal unit code instead of the unit's display name. This now shows the correct display name.